



5

eSIGNAL BASICS

eSIGNAL IS DESIGNED so that you can tailor it to your own particular needs and preferences. Just as the broad selection of subscription services enables you to pick and choose the data you'll receive, the eSignal application lets you determine how that data will be organized and presented.

With a few exceptions (which we'll point out), eSignal functions much like other standard Windows applications. If you have worked with Windows and other applications and feel comfortable with your ability to get things done, you may want to skim this section quickly and move on. On the other hand, if you're new to Windows, this chapter reviews the basic concepts behind organizing and displaying data and explains the nuts-and-bolts features of eSignal.

HELP

If this is your first foray into Windows and you're frustrated and bewildered, you may want to take a break and check out Getting Started in Windows Help. In Windows 98 or Windows 2000, just click the Start button and then Help. In the Contents tab, choose the Getting Started Book.

Starting and Exiting the Application

You start and stop eSignal like any other Windows application. The only slightly tricky thing to keep in mind is that the Data Manager must be running before you'll get any data. Fear not, eSignal automatically starts the Data Manager for you if it isn't already running.

You need to establish an Internet connection before you start eSignal (see Chapter 4, Connecting to the Internet).

You can start eSignal via the Start menu, but the simplest way is to double-click the desktop icon that is added during the installation.

To start the application

- 1 Double-click the eSignal icon on your desktop.



The eSignal application window appears. If the Data Manager isn't already running, it starts automatically. After a few seconds, data begins to appear in eSignal.



NOTE: The first time you run eSignal, you'll be presented with a default layout similar to that shown above. Later in this Chapter, you'll learn how to open other sample layouts, as well as how to create and save your own layouts.

Exiting from eSignal

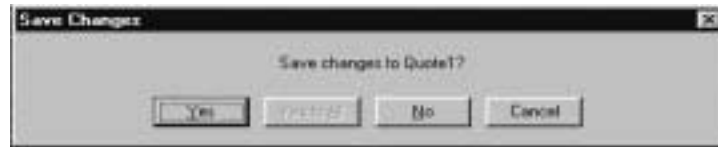
When you're working in eSignal, you are actually running two and sometimes three applications. So in addition to the standard Exit command in the File menu, which simply closes eSignal, there is an Exit All and Save command. Exit All and Save closes eSignal, the Data Manager, and the Text Manager if it's open. The command also saves any changes you've made to windows or layouts (more about these later).

Use the normal Exit command if you want to leave the Data Manager running; use Exit All and Save if you want to shut everything down.

To exit from the application

- 1 Choose Exit from the File menu or close the main application window using the standard close icon in the title bar.

If there are changes to the layout or any windows, a dialog box asks if you want to save the changes.



- 2 Click Yes to save your changes or No not to save them. If you've made changes to more than one window and want to save them all, click Yes to All.

To exit all applications and save changes

Click Exit All and Save from the File menu (Ctrl-E).

Anatomy of the Application Window

When you open eSignal, it displays a main or application window, which in turn contains individual data windows—Quote windows, Chart windows, and so on.

The application window (Figure 5-1) includes menus, a toolbar, and other features you'll use to get things done in eSignal.



Figure 5-1. eSignal Application Window

Title Bar



The title bar is located at the very top of the application window. It shows the application name and current layout. It also includes the standard Windows controls for minimizing, resizing, and closing the application window.

Status Bar



The status bar, located at the bottom of the application window, provides important status information. Pay particular attention to the password and reception indicators on the far right. If they're not displaying "OK," then you may not be receiving data. The total symbol indicator on the status bar keeps track of the symbol count for the whole layout so that 50/100 symbol eSignal subscribers know when they are getting close to their limit without having to open the Data Manager application. The line number indicator shows what window line your cursor is on and the Alert Indicator displays when one or more limit alerts have been triggered.

Menu Line

The menu line sits just below the title bar. The menus provide access to the commands that you'll use as you work with eSignal. You'll notice that the menu selection changes depending on which window you are working in. For example, if you're

working in a Quote window, the menu bar includes a Quote Options menu. If the Ticker window is active, you'll see a Ticker Options menu.



To open a menu and select a command

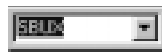
- 1 Click the menu name from the menu bar. The commands available from the menu appear in a drop-down box.
- 2 Click the command name from the list.

NOTE: Sometimes a command appears “grayed-out.” This means that it’s not available. This occurs if the command doesn’t apply to the window you’re working in or if your subscription service level doesn’t entitle you to use the command.

Toolbar

The toolbar sits below the menu bar. Clicking an icon in the toolbar is a shortcut to the menu commands you'll use most frequently.

Here's a brief description of what each icon does:



Symbol Box



Shortcut for linking the symbol in the drop-down symbol box to other windows.



Shortcut for creating a new eSignal window.



Shortcut for creating a new Chart window.



Shortcut for creating a new Portfolio window.



Shortcut for opening a file.



Shortcut for saving the active window.



Cuts the highlighted symbol.



Copies the highlighted symbol to the clipboard.



Pastes a symbol from the clipboard into the active window.



Shortcut for printing the active window



Shortcut for finding a symbol in the active window.



Shortcut for opening the Text Manager and displaying all headlines.



Shortcut for opening the Text Manager and displaying a report list.



Shortcut for accessing Dow Jones Hot News stories



Shortcut for opening and closing the Leaders window



Shortcut for inserting an autolist or option chain for the highlighted symbol.



Shortcut for opening the All Alerts dialog box



Symbol Lookup shortcut



Activates the Help pointer.



Opens a Browser window linking you to eSignal Web Resources such as news, research, etc.



Opens a Browser window containing your broker's web page. If you haven't already set up the Trade! button, you'll be presented with instructions for configuring it.



Opens a Browser window containing the eSignal Pro web site (for eSignal Pro subscribers only).

Layouts

A layout is an arrangement of data windows within the main application window. Layouts include the windows that are open, their size, and their position.

Figure 5-2 is an example of an eSignal layout.



Figure 5-2. Sample eSignal Layout

You can use the Layout menu to access a variety of sample layouts for particular screen resolutions as well as custom layouts that you create and save yourself.

Working with Windows

Once you start using eSignal, you'll probably want to change how the windows on your screen appear. You'll find it easy to open and close windows, and even to change a window's size, position, colors and type styles.

Let's take a quick look at how you accomplish these basic tasks. As you read about the different window types in the succeeding chapters, you'll discover even more ways to tailor the look and feel of a specific window type.

Opening, Saving, and Closing Windows

Opening, saving, and closing windows are activities that all start from the File menu. The commands and steps you'll use are much the same as those of any other windows application. Here's a description of the basic File menu commands you'll use to open, save, and close windows:

To open a new window

- 1 Choose New from the File menu (Alt-F, N or Ctrl-N), and the New dialog box appears.
- 2 Click the window type from the list, and then click OK. A new window of the type you selected appears on your screen, ready to use.

To open an existing window

- 1 Choose Open from the File menu (Alt-F, O or Ctrl-O) or click the File Open toolbar icon to display the Open dialog box.
- 2 Choose a file type from the Files of type drop-down list to display files of a particular type.
- 3 Double-click the file you want from the file list or click the file name and then click Open.

To save a window

- 1 Click inside the window to make sure it is active, and then choose Save from the File menu (Alt-F, S).

To save a new window or an existing window to a new file

- 1 Click inside the window to make sure it is active, and then choose Save As from the File menu (Alt-F, A).
- 2 Enter a file name for the window, and then click Save.

To close a window

- 1 Click inside the window to make sure it is active, and then choose Close from the File menu (Alt-F, C) or the Close icon on the window's title bar.

The window will close unless you've made changes, in which case you'll be prompted to save your changes.

- 2 Click Yes to save your changes and close the window, or click No to close the window without saving your changes.

Resizing Windows

You can resize windows, making them bigger or smaller, to fit your screen and layout. The new size and orientation are saved when you save the window and layout.

To resize windows

- 1 Position the cursor on a side or corner of the window. The cursor changes to a two-headed arrow.
- 2 Hold down the left mouse button and drag the corner or side. If you drag a side, the window size changes only on the side you are dragging. If you drag a corner, the two sides that form the corner change size together.
- 3 Release the mouse button when the window is the size you want.

You can also use the Maximize and Restore buttons on a window's title bar to toggle between the window's current size and a full screen view. This is handy if you want to view more data without having to scroll.

Moving Windows

You can move windows to place them wherever they're most convenient. Your new window placement is saved when you save the window arrangement or layout.

To move a window

- 1 Click in the title bar of a window. If the window's title bar is turned off, go to the window's Options menu and turn it on to make it visible.
- 2 Hold down the left mouse button and drag the window to the location you want.

Cascade and Tile

The Window menu includes two powerful commands that allow you to rearrange all the open windows at once.

- 1 **Cascade** (Alt-W, C). The Cascade command layers the windows on top of each other in an overlapping arrangement. Only the top window is completely visible. To view another window, you'll need to click on its title bar to move it to the top.
- 1 **Tile** (Alt-W, T). The Tile command displays all the open windows side by side, without overlap.

Changing Colors and Fonts

It's easy to change color and text characteristics for a window. For example, you can change background colors or increase the size of text to make a window more pleasing to view and easier to read.

The Colors and Fonts commands are available from the option menu or in some cases by right-clicking inside the window (more about right-clicking later). When you select either of these commands, you will be presented with a dialog box where you can make your changes.



For more detailed information, click Help in the Colors or Fonts Dialog boxes.

Saving Defaults

This is a great time saver. Say you've created a window that really meets your needs. It's the right size and in the right location on your screen. The colors, fonts, and grid-lines are perfect. You can choose Save Defaults from the Options menu and save the window's characteristics as the default for the window type; then every time you create a new window of that type, it will display with the same attributes.

Right-Clicking

As you're becoming familiar with eSignal, try right-clicking your mouse button on the different components of each window. Right-clicking is a shortcut for getting work done. When you right-click from within any window, you'll be presented with a menu of commands from which you can choose. The actions you can take depend on the window type and where you clicked within the window. For example, if you right-click on a symbol in a Quote window, your choices look a lot different than if you right-click a column header.

The commands that pop up when you right-click a symbol or its data row are associated with the symbol. For example, if you right-click IBM and choose Detail window from the pop-up menu, a Detail window displaying IBM's data opens.

Figure 5-3 shows the menu you'd see by right-clicking a symbol in a Quote window. The symbol pop-up menus in other windows are the same or a subset of the menu

shown in the figure. Commands that are grayed out either don't apply to the window or issue, or are not part of your subscription service.

Symbol	T	Last	H	Change	Bid	Ask	Vol
CRBS		15.43	15.43	0.56	+15.20	15.46	2.46M
CY				0.56	0.01	39.90	991K
HD				0.92	50.00	100.00	9.27M
ROST				0.40	-35.70	36.70	621K
WFMI				0.39	-41.95	45.31	436K
WSM				0.24	0.01	90.70	719K
TGT				2.00	0.01	84.02	15.9M
IBM				0.29	90.01	170.12	7.94M
T				0.09	14.50	15.54	10.8M
S				0.32	0.01	105.22	2.34M
F				0.42	14.30	15.15	8.45M
GM				0.79	62.56	64.02	13.4M
UST				0.12	0.01	69.70	432K

Figure 5-3. Right-click Pop-Up Menu for a Data Row

Here's where each of the commands leads you:

- 1 **News.** Choosing News starts up the Text Manager and displays headlines that apply to the issue.
- 1 **NASDAQ Level II.** This is available only for NASDAQ issues. It opens a NASDAQ Level II window for the selected issue.
- 1 **Quote Montage.** This option is visible when you right click on a listed NYSE or AMEX issue. It opens a Level II window and displays both exchange listed and regional stock quotes for the selected issue.
- 1 **Option Chain.** Choosing Option Chain automatically lists options data for the underlying symbol.
- 1 **Autolist.** This is only available for NYSE or AMEX listed issues or futures. It opens a new Quote window that displays current regional quotes for the selected NYSE or AMEX issue or active contracts for the selected futures contract.

- 1 **Daily History.** This lets you create a new Chart window from a selection of daily history chart types.
- 1 **Intraday History.** This lets you create a new Chart window from a selection of intraday history chart types.
- 1 **Advanced Chart.** This lets you create a new Advanced Chart window which supports enhanced scaling, custom formulas and studies.
- 1 **Detail window.** Choosing Detail displays detail information in a Detail window.
- 1 **Fundamental.** Choosing Fundamental displays fundamental data in a Detail window.
- 1 **Island Book.** Choosing Island Book lets you view after-hours trading data for stocks traded on the Island ECN.
- 1 **Research.** This lets you view research information from a variety of online sources. When you select a source the browser window displays information for the source and symbol you selected.
- 1 **Set Alert.** Choosing Set Alert lets you set an alert for the issue you selected.
- 1 **Edit.** Edit is a shortcut method for accessing the commands on the Edit menu.
- 1 **Trade.** Choosing Trade starts a separate application that takes you directly into your brokerage account. This option is available only if you have an account with an online brokerage that accepts direct trading commands from eSignal. See Chapter 19, Integrated Trading Features.

The commands that pop up when you right-click other windows provide shortcuts for editing. The actual commands vary depending on the window and component. For example, when you right-click in a Chart window, your choices may include changing colors or fonts, and drawing trendlines. By contrast, when you right-click a column heading in a Quote window, you see all the commands for editing a column heading.

Figure 5-4 shows what the pop-up menu looks like if you right-click on a Quote window column heading.

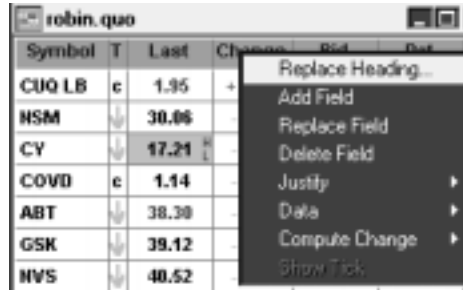


Figure 5-4. Right-Click Pop-Up Menu for a Column Heading

Working with Layouts

eSignal includes a selection of sample layouts. These sample layouts are designed to highlight various types of data and are optimized for different display resolutions. All the available layouts—the sample layouts supplied with the program as well as those you have saved—appear in the Layouts menu. When you want to display a different layout, just go to the Layout menu and click the layout you want.

Use the sample layouts to learn about the capabilities and characteristics of the different window types. Once you're comfortable, you can create your own layouts by setting up windows to suit your needs; then save the layout (Alt-F, E). You can also use the samples as a starting point for creating new layouts. You can change symbols in the sample windows, remove unwanted windows and add new ones, resize and reposition windows, and then save them as a new layout (Alt-F, Y).

Whenever you change a layout, you'll need to save your changes to the layout to make them available for later use. You can save a layout to its existing name by choosing Save Layout from the Layout menu or you can leave the existing layout unchanged and create a new layout that includes the current changes by choosing Save Layout As from the Layout menu and giving it a new name.

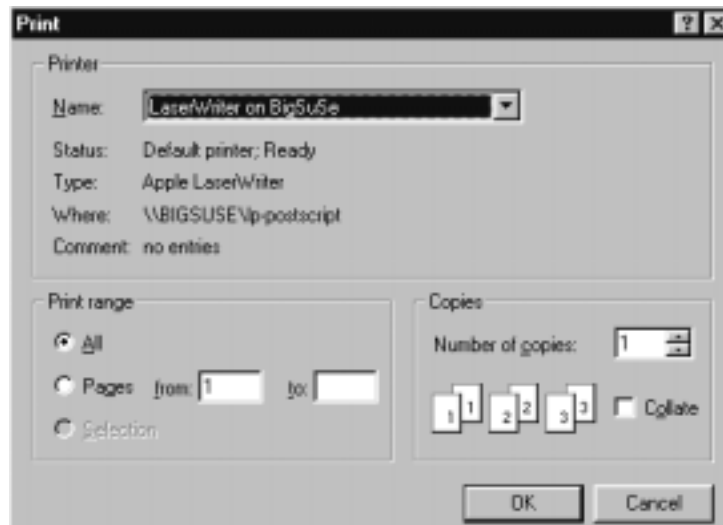
Printing and Previewing

Printing and previewing in eSignal are similar to printing and previewing in other Windows applications. Unlike other applications, however, eSignal gives you the flexibility to define print settings for each window type.

To print a window

- 1 Click inside the window to make sure it's the active window.
- 2 Choose Print from the File menu (Alt-F, P or Ctrl-P). Alternatively, click the Print toolbar icon.

The Print dialog box appears.



- 3** Make any of the following changes to match your printing requirements:
 - Choose a different printer from the pull-down list.
 - Choose a range of pages to print.
 - Change the number of copies to be printed.
- 4** Click OK to print the window contents.

You can preview what a document will look like before you print it. The document is displayed in a special Print Preview window. You can move through the document with the Next Page or Previous Page button, see two pages at once with the Two Page button, zoom in and out with the Zoom In and Zoom Out buttons, and print the document with the Print button.

To preview a document

- 1** Click inside the window to make sure it's the active window.
- 2** Choose Print Preview from the File menu (Alt-F, V).

The window's content is displayed on your screen as it would appear when printed.



- 3 When you're finished looking at the document, click the Print button to print the document or click the Close button. Either action closes the Print Preview window and returns you to the application window.

You can specify print settings for a particular print job or for a particular window type.

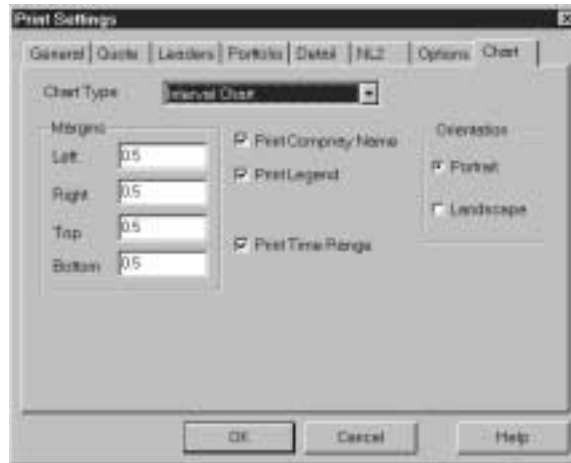
To set printer options

- 1 Click inside the window to make sure it's the active window.
- 2 Choose Print Setup from the File menu (Alt-F, R).

The Print Setup dialog box appears.



- 3 Make any of the following changes to match your printing requirements:
 - Choose a different printer from the Name pull-down list.
 - Choose a paper size and source.
 - Choose a page orientation.
- 4 Click the Settings button to set options for each window type. The tab for the window you're printing should appear on top. If it isn't, click it and modify the settings to meet your needs.



- 5 When you're finished, Click OK to return to Print Setup and OK again to save the settings.



See online Help for each of the tabs in the Print Settings dialog box for detailed information.

Resetting Databases

On rare occasions, communication problems cause your eSignal data to get out of sync with the eSignal database from which the data comes. This may result in bad data for an issue or may even lock up the data feed. You can resolve the problem and refresh your data by resetting your databases.

Use one of the following methods to reset your databases

- 1 Select Preferences from the File menu. Click the Clear Cache button then click OK to close the dialog box.
- 2 While you are connected to eSignal, open the Data Manager window by clicking the Data Manager button on the Windows taskbar at the bottom of your screen.

- 3 Choose Symbols from the Data menu. The Symbols dialog box appears.



- 4 Click Reset DBs. This clears all symbols and data from the Data Manager databases. Symbols listed in active Signal windows are then automatically reinserted into Data Manager from the eSignal databases.

Chapter 5
ESIGNAL BASICS